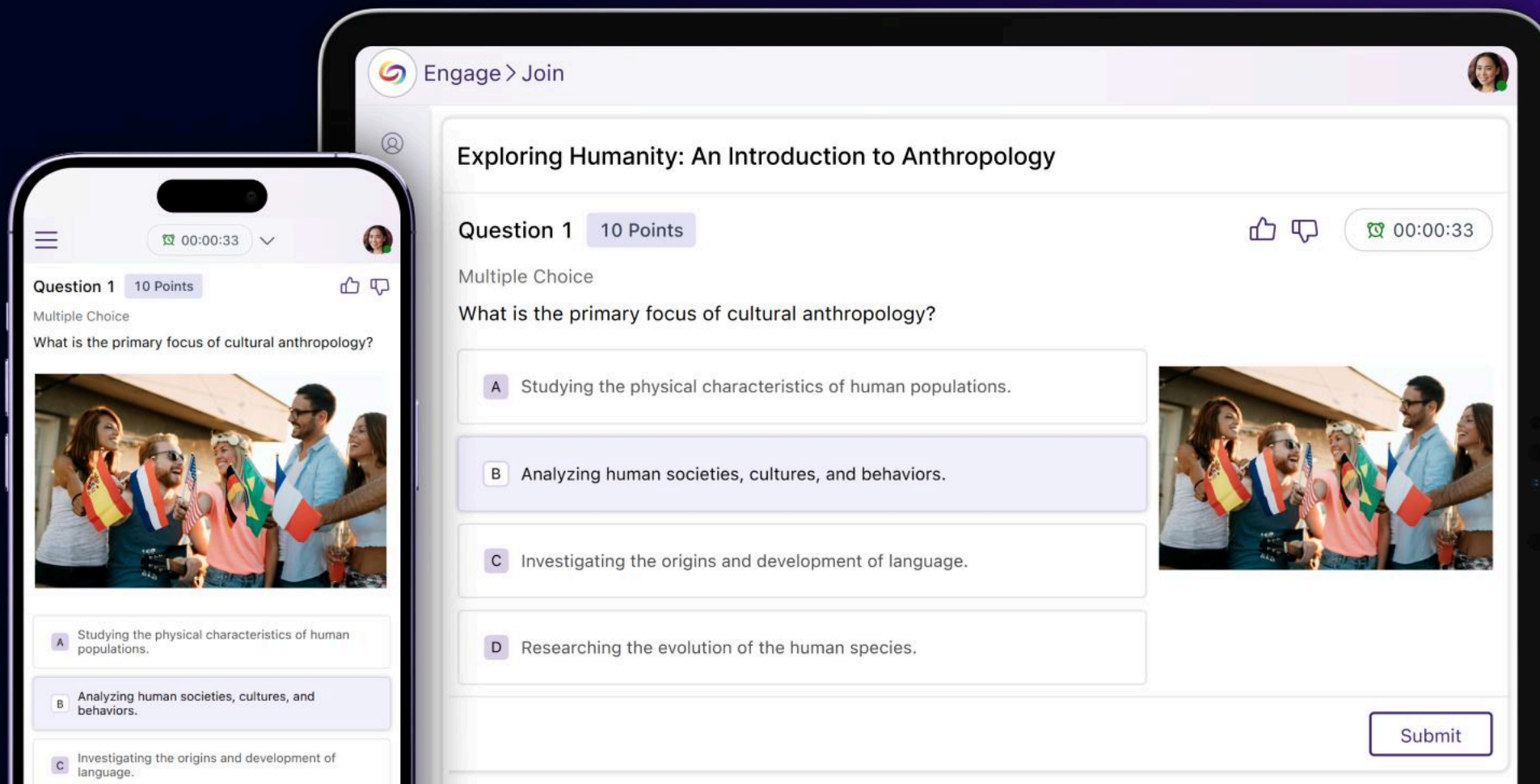


YuJa Engage Student Response System



Real-Time Classroom Polling with Grade Book Sync





Engage Students With Interactive Polls

Student Response System ↓

Live Polling ↓

Attendance Tracking ↓

Mobile Apps ↓

Classroom Gamification ↓

Analytics ↓

Integrations ↓

24/7 Support ↓

Engage > Release Poll

Modern Art Movements: A Quick Poll

< View all questions

00:00:07

Stop Q1

Attention: Would you like to give participants more time to answer? [Add more time.](#)

1 out of 1 Multiple Choice


Which movement is considered the beginning of Modern Art?

A Impressionism 15

B Baroque 5

C Renaissance 3

D Romanticism 2




Response

Participants

Total Participants

How to Join the Activity

To join directly, either scan the QR code or copy the link and paste it into your browser.



467682

Link



A Comprehensive Student Response System

Engage > Release Poll

< View all questions

00:16:10 Release Q1

1 out of 1 Word Cloud

What words best describe your experience using technology for learning?

Accessible
Convenient
Flexible Fun Motivating
Innovative Challenging
Interactive

Participants

Number of participants for Q1

Done 22

In Progress 17

Completion Rate 100.0%

Total Participants

By Browser

- Chrome - 14
- Edge - 7
- Safari - 5
- Firefox - 4
- Mobile App - 7
- Other - 2

How to Join the Activity

To join directly, either scan the QR code or copy the link and paste it into your browser.

424128



Connect With Students Across
Live, Hybrid, and Online Classes



Integrate a Variety of Question
Types Into Courses



Get Real-Time Feedback on
Student Learning and Performance



Live and Interactive Classroom Polling

Engage and connect with students across live and hybrid courses using any device.



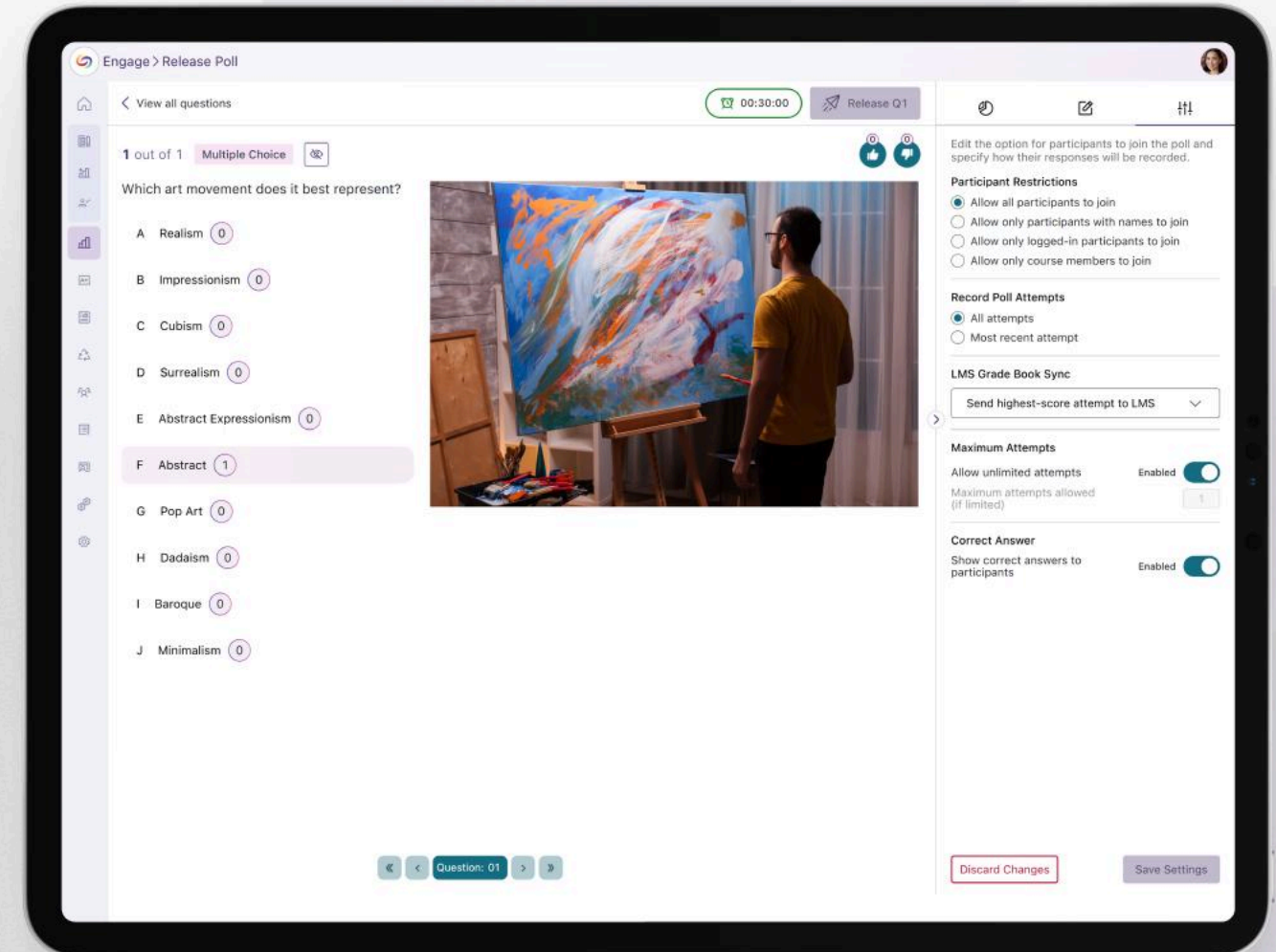
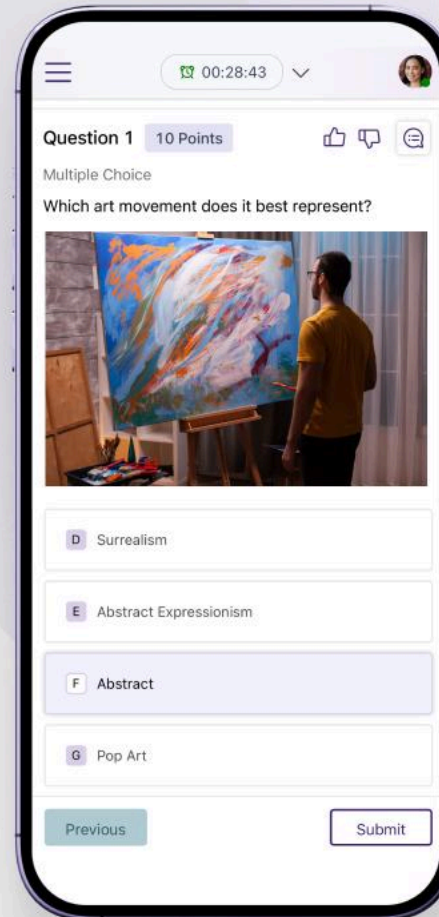
Break Up Your Lecture



Spur Discussion



Reveal Knowledge Gaps





On-the-Go Polling with Mobile Apps

iOS and Android apps make it simple to join and manage polls from iOS and Android devices.



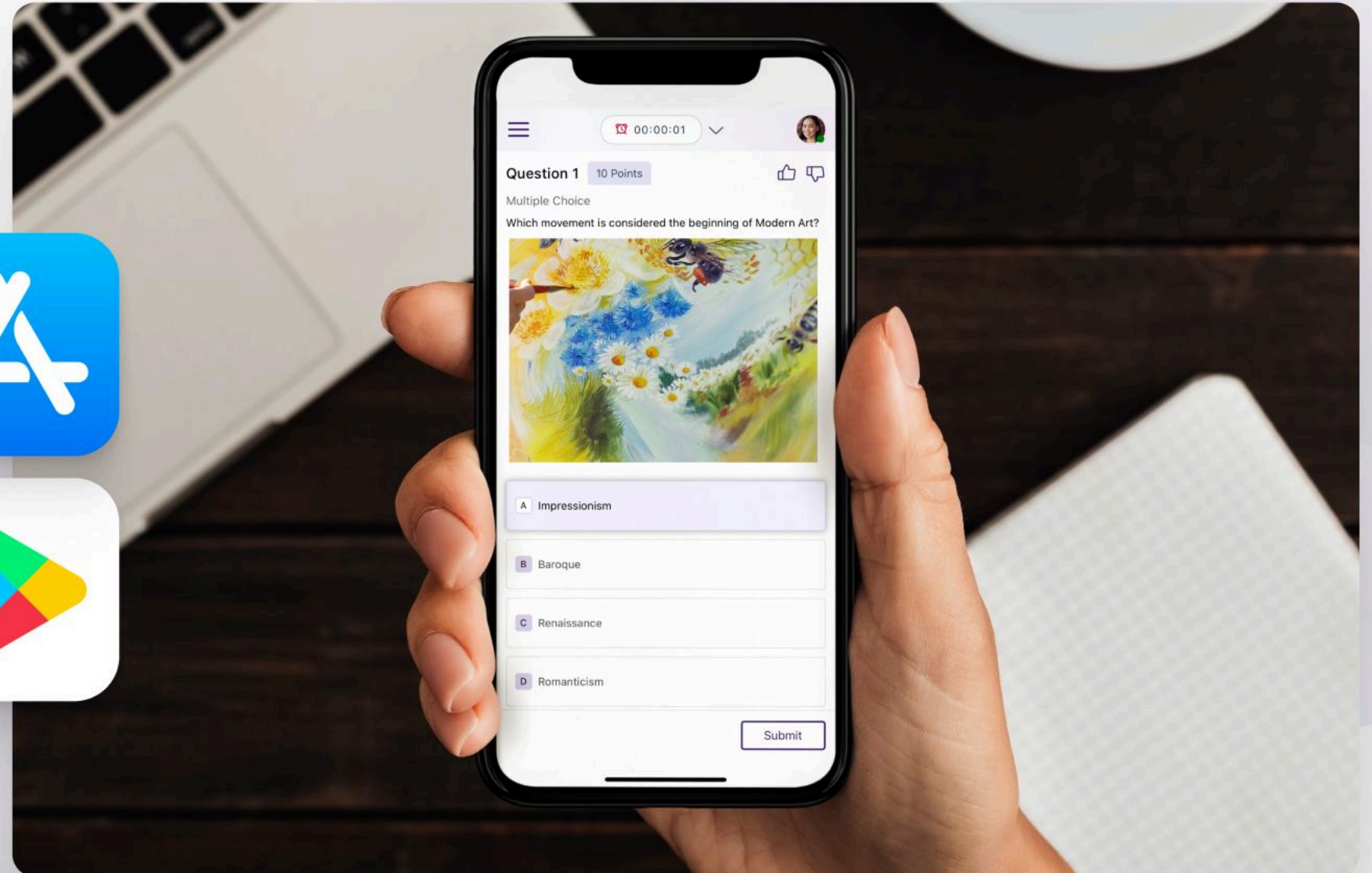
View Embedded Videos



Provide Real-Time Feedback



Track Academic Progress





Gamify Your Classroom

YuJa Engage offers a variety of question types to foster active learning.

The screenshot displays the 'Engage > Create Poll' interface. On the left sidebar, there are navigation icons and a 'Question List' section for 'Question 1' (10 points) with a 'Select Question Type' dropdown and a '+ Add Question' button. The main area is titled 'Choose a Question Type' and features two sections: 'Commonly Used Question Types' and 'More Question Types'. Each type includes an icon, a title, and a brief description.

Commonly Used Question Types

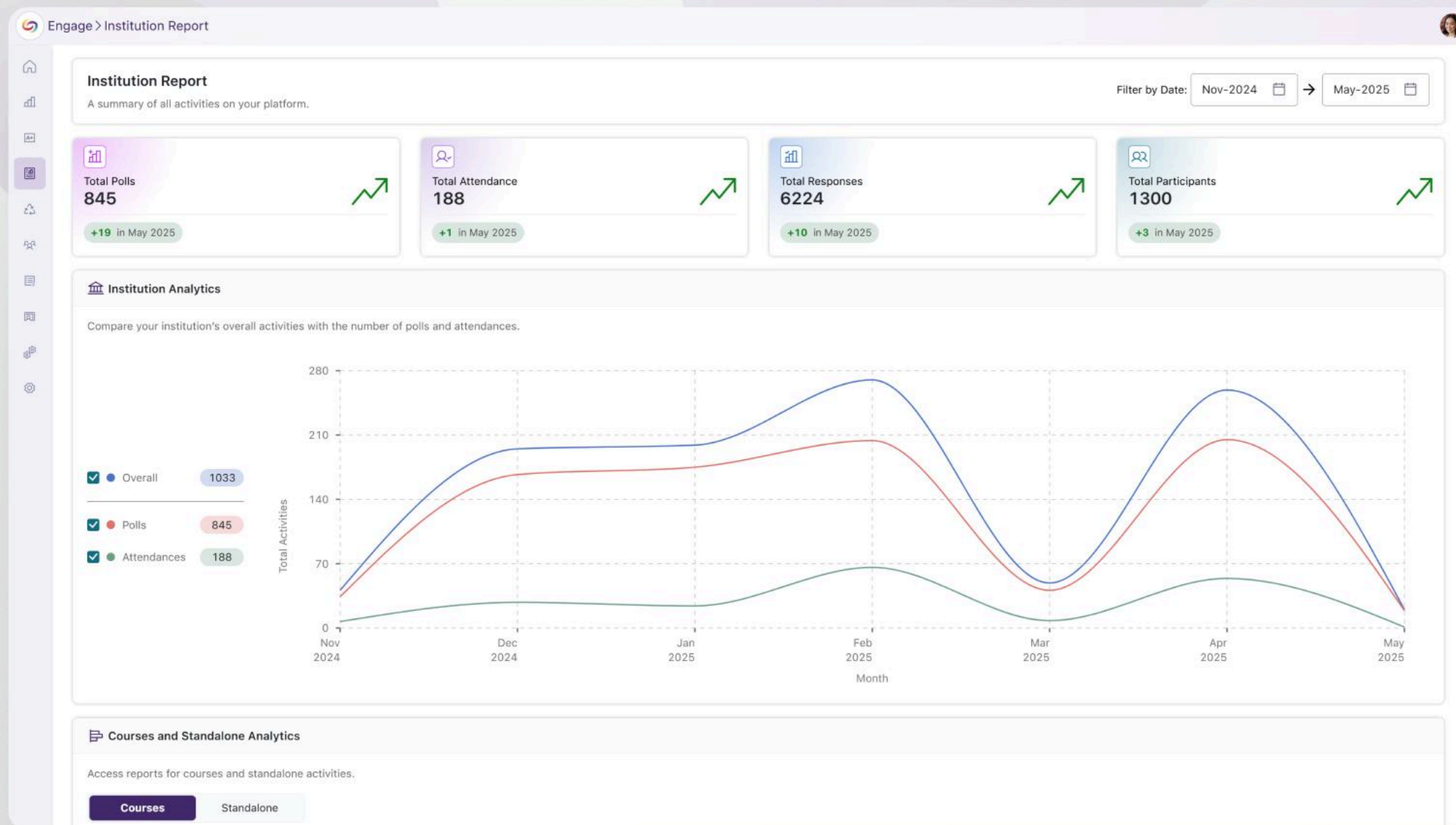
- Multiple Choice**: Ask a question with options to choose from.
- Short Answer**: Ask a question requiring a written response.
- True or False**: Provide a statement that is either true or false.
- Fill in the Blank**: Provide a statement with blanks to fill in.
- Clickable Image**: Upload an image with clickable options as answers.
- World Cloud**: Visualize responses as a dynamic word cloud.

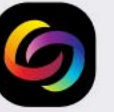
More Question Types

- Ranking**: Provide options that can be ranked in order of preference.
- Open Discussion**: Ask a question to allow ideas to be shared.
- Icebreaker**: Create fun questions to kick off group activities.



View In-Depth Engagement Analytics





Seamless Grading and LMS Gradebook Sync

The screenshot displays the YuJa Engage Grade Book interface. The left sidebar contains navigation links: Home, Announcements, Assignments, Discussions, Grades, People, Pages, Files, Syllabus, Rubrics, Quizzes, Collaborations, YuJa Engage, and Settings. The main content area shows the 'Engage > Grade Book > Poll' path. A dropdown menu is set to 'Literature 101 Poll' with 'Get Results' and 'Export Grade Book' buttons. A search bar is labeled 'Search by participant name'. Below is a table with columns: Participant, Percentage, Score, Q1, Q2, Q3, Q4, Q5, Q6, and Actions. The table lists four participants: Alice Morgan (04), Liam Turner (01), Aaron Blake (01), and Sophia Nguyen (01). Each row shows their percentage, score, and individual question results (Q1-Q6) using icons for correct, incorrect, or pending status. A pagination bar at the bottom shows '1' as the current page.

Participant	Percentage	Score	Q1	Q2	Q3	Q4	Q5	Q6	Actions
> Alice Morgan 04	0.00%	0/100	⚠	⚠	⚠	⚠	⚠	⚠	⋮
> Liam Turner 01	20.00%	20/100	✗	⚠	✓	✗	✗	⚠	⋮
> Aaron Blake 01	0.00%	0/100	⚠	⚠	⚠	⚠	⚠	⚠	⋮
> Sophia Nguyen 01	10.00%	10/100	✗	⚠	✗	✗	✗	⚠	⋮



Blackboard





Live Product Training and 24/7 Total User Support



Contact

Toll-Free (US/CAN)

+1 (888) 257-2278

Toll Free (UK)

+44 (800) 058-4054

International

+1 (408) 508-6796

E-mail: support@yuja.com

Web: www.yuja.com



California Office

YuJa Inc.
84 W. Santa Clara St.
Fourth Floor
San Jose, CA 95113



Toronto Office

YuJa Canada, Inc.
235 Yorkland Blvd
Suite 800
Toronto, ON